

Pear tree Hill Solar Farm

Environmental Statement

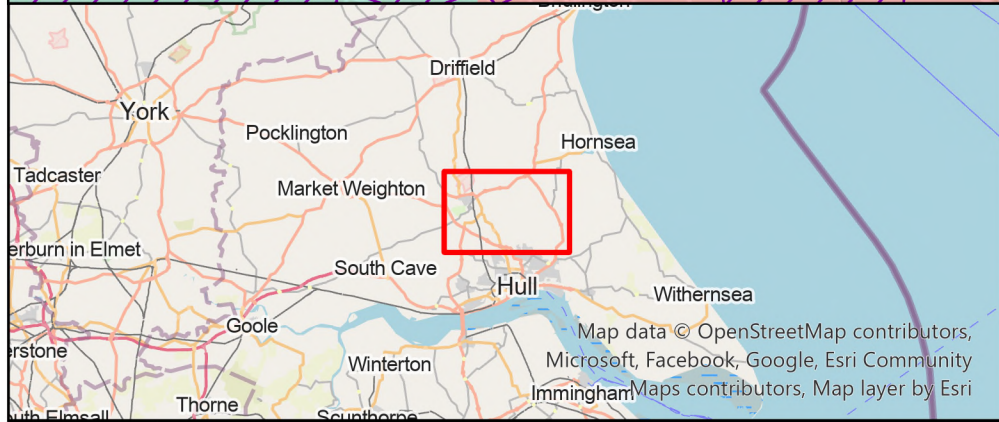
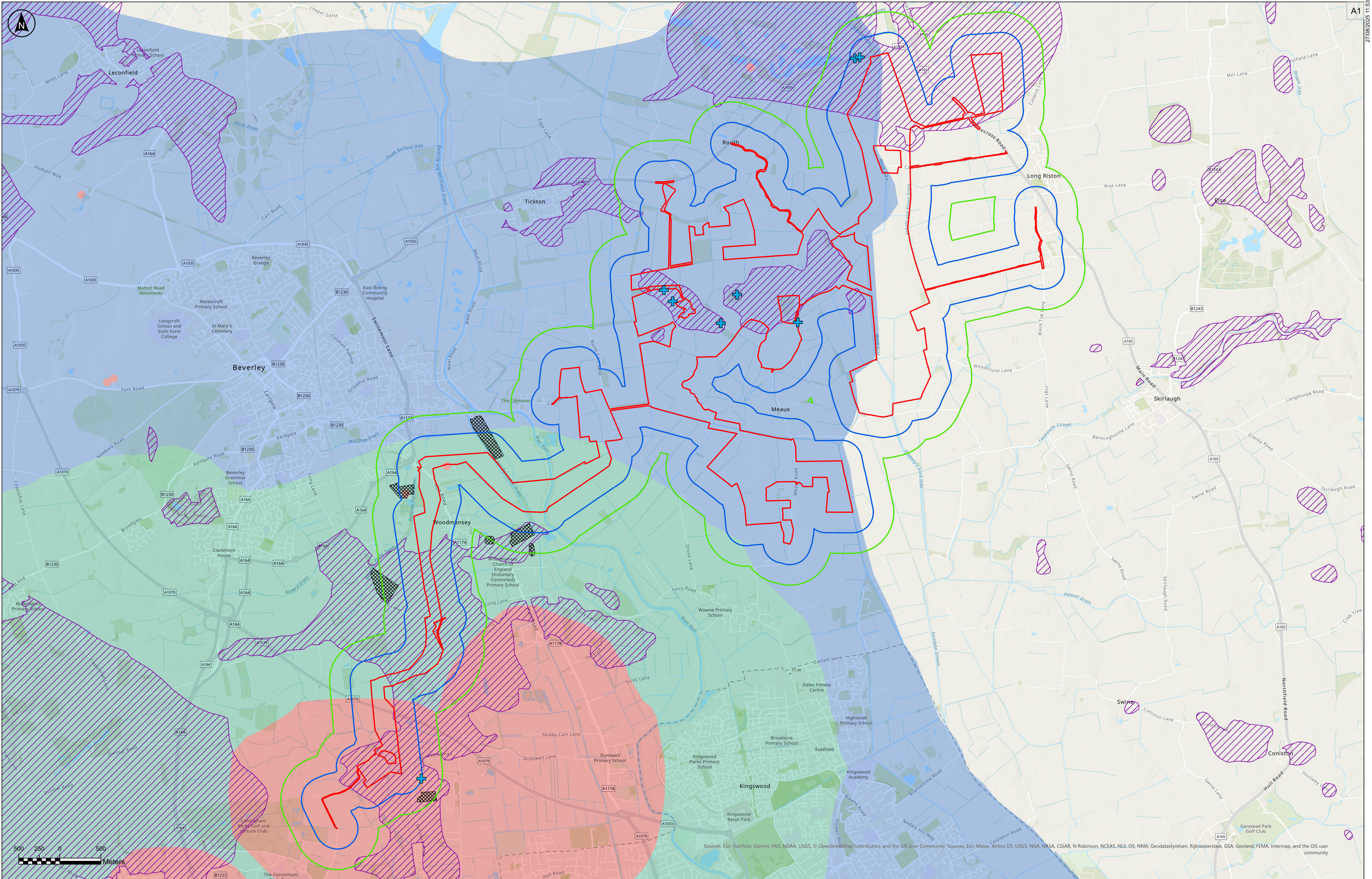
Volume 3

Figure 10.1: Study Areas and Key Features for Land, Soil and Groundwater

Revision 2

Application Document Ref: EN010157/APP/6.3
September 2025

Planning Act 2008
Infrastructure Planning
(Applications: Prescribed Forms
and Procedure) Regulations 2009 –
Regulation 5(2)(a)



Order Limits

Study Area Extent for Land and Soil (250 m Buffer Outside Order Limits)

Study Area Extent for Groundwater (500 m Buffer Outside Order Limits)

Local Authority Administrative Boundary

Mineral Safeguarding Areas

Historical Mineral Sites

Historical Landfill Sites

Groundwater Source Protection Zones

Inner Zone (Zone 1)

Outer Zone (Zone 2)

Total Catchment (Zone 3)

The Base mapping is based upon Ordnance Survey (OS) data. Reproduced by permission of Ordnance Survey on behalf of HMSO. © Crown copyright and database right 2023. All rights reserved. Ordnance Survey license number 0100031673

Notes:
MSA data has been digitised by RSK using georeferenced PDFs of East Riding of Yorkshire Council's 'Joint Minerals Local Plan - Adopted Policies Map'.
Historical Landfill Site Ref 60887 has been digitised using a georeferenced PDF.

P02	27/08/2025	CJ	FC	MM	MM
Rev	Date	By	Chkd	Appd	Authd

Client

RWE

Designer

RSK

Project Name
Peartree Hill Solar Farm

Drawing Title
**Environmental Statement
Volume 3, Figure 10.1:
Study Areas and
Key Features for Land, Soil
and Groundwater**

Scale at A1 1:21,000	Coordinate System: British National Grid
Status DCO Application	
PINS Number EN010157/APP/6.3	Rev P02
SHEET 1 OF 1	

RWE Renewables UK Limited

Windmill Hill Business Park,
Whitehill Way,
Swindon,
Wiltshire,
England,
SN5 6PB
www.rwe.com